

Holford news & views



December 2023

The editorial team

Mo Plomgren, Mike Pearce, Mike and Gae Richardson and Emma Cavendish

Editorial

Well, this has certainly been a year to remember. Our lives have been full of the awful events happening in the world. Wars in Yemen, Ukraine and now Gaza have shown us heart breaking images, some of which we would like to forget. Changes in weather patterns have left us baffled as to which season we are in and globally extreme events have caused havoc.



What can we do? Very little it seems but what we CAN do is think of Christmas and hope to share some joy with our friends and family. There is a lot of good happening at this time of year and we can focus on that and raise a glass to absent friends. As you will see in this edition there are lots of fun opportunities to get together in December to enjoy our time. Be of good cheer and support good causes if you are able!

This will be our last printed edition as we will soon be fully online. As always you can contact any of the team and ask for a paper copy if you don't have internet access. Copies will also be left in the Church, the Village Hall and the Pub.

This edition will also be on the Holford Village website with additional articles, our thanks to David Talling.

Please let us have your submissions for the February edition by January 14th. Please send to emmacavendish01@aol.com or hand copy to any of the editorial team. **A very merry Christmas and Happy New Year from all of the team.**



**Our thanks to The Plough
for sponsoring this edition**



CHRISTMAS AT THE PLOUGH INN

MONDAY 27TH NOV UNTIL FRIDAY 22ND DEC	SET CHRISTMAS MENU BEING SERVED	POP IN OR CALL US FOR FULL DETAILS AND TO BOOK YOUR PARTY
SUNDAY 10TH DEC - FROM 3.30PM & THROUGH INTO THE EVENING	BAUBLES TO CANCER - A TIME TO REMEMBER & CELEBRATE OUR LOVED ONES. ALL IN AID OF CANCER RESEARCH UK	DEDICATE A BAUBLE TO A LOVED ONE AND HANG ON THE CHRISTMAS TREE
THURSDAY 14TH DEC - 6.30PM	TURNING ON OF THE EXTERNAL CHRISTMAS TREE LIGHTS & CAROLLING	THE PLOUGH INN PUB GARDEN, CAROL SINGING, MINCE PIES & MULLED WINE
THURSDAY 21ST DEC - 7.45PM	CHRISTMAS CHARITY QUIZ NIGHT	THE NORMAL SHENANIGANS BUT WITH A CHRISTMAS TWIST
SUNDAY 24TH DEC - FUN FROM 6.30PM	THE LEGENDARY CHARITY CHRISTMAS EVE BONANZA ALL PROCEEDS SPLIT ACROSS OUR NOMINATED CHARITIES	BIG PRIZES, MUSIC & RAFFLE INCLUDING "PLAY YOUR CHRISTMAS CARDS RIGHT"
CHRISTMAS DAY	DRINKS ONLY	SERVED FROM 11.30AM - 1.30PM
SUNDAY 31ST DEC - 8PM - LATE	NEW YEARS EVE - LAS VEGAS COMES TO HOLFORD, WITH FULL-SIZE ROULETTE & BLACK JACK TABLES, PROFESSIONAL CROUPIERS AND HUGE PRIZES TO WIN.	TICKETS ON SALE NOW - ONLY £15 INCLUDES FINGER BUFFET, AFTERPARTY & PLENTY OF BUBBLY TO SEE IN 2024
MONDAY 1ST JANUARY 2024	NYD	OPEN ALL DAY - FOOD SERVED UNTIL 6.30PM
SATURDAY 6TH JANUARY 2024	WASSAIL AT COLE POOL ORCHARD, BURTON TA5 1RY. PROCESSION WILL LEAVE STOGURSEY VILLAGE HALL AT 1PM, WASSAIL STARTS AT 1.30PM	THERE WILL BE A BONFIRE, MULLED CIDER, HOT FOOD & DRINKS TO PURCHASE AND NOISY FESTIVITIES IN MEMORY OF PETE CROSS AND IN AID OF CANCER RESEARCH UK.

01278 741 624

ENQUIRIES@THEPLOUGHINNHOLFORD.CO.UK





Village Hall News

"Dracula in Space" was a great Take Art evening. Full of laughter, terrific string playing and theatricals. It was good to see so many people from all around Holford and villages there.

The Hall Lottery results are elsewhere in this edition. Thank you to all who support this. The draw takes place at Coffee and Cake mornings on the 1st. Saturday of each month. Tickets are still available.

The Autumn Hall maintenance morning took place recently as anyone who has used the bus shelter will have seen. Tasks were carried out both externally and internally. Another morning will be held in the spring. If you would like to help, the date will be announced in this newsletter nearer the time.

Forthcoming dates at The Hall: -

Christmas Bingo: in Aid of Cancer Research U.K. Saturday 9th December 6.30 for 7 pm
Take Art: Thursday 22nd February, 2024. 7 o'clock for 7.30 p.m. (Cash Bar)

Further information on activities, dates etc. is available on the Village and Village Hall websites:- www.holfordvillage.com and www.holfordvillagehall.org AJM

Take Art Event: Bowjangles- Dracula in Space



On Friday 27 October, Holford Village Hall was privileged to host a Take Art performance by Bowjangles called Dracula in Space. Very topical for this 'spooky' time of year, this award winning, internationally acclaimed string quartet presented their sci-fi horror musical comedy to a full house and it is fair to say that most of us hadn't laughed so much for a long time!

Incredibly talented musicians and actors who forged great rapport with the audience and had a real gift for comedic timing. My 9 and 11 year-old grandchildren were enthralled and haven't stopped talking about it since, and the comments I received from members of the audience were all consistently glowing and enthusiastic with many saying that this was probably the best Take Art show they had ever been to. Many thanks to all those who helped with a particular mention for Andrew Mew and Mark Kelloway who ran the bar on the evening.

The next Take Art event in Holford Village Hall is booked for Thursday, 22nd February 2024, and we are excited to host the amazing award-winning singer-songwriter Blair Dunlop. He has great lyrical and musical maturity which underpins his songwriting and has toured extensively in Europe and Australia, appearing at festivals such as Glastonbury, Cambridge Folk Festival, Port Fairy and Woodford. Do check him out on line to get a better idea of his performance style, and then look out for posters, fliers through your door and ticket sales which we will actively promote closer to the time. We look forward to seeing you there.

Scam Warning

We would like to report a recent email scam that has happened in our village and sadly one resident was taken in by it. An email which appeared to be from a friend was sent to all the people in their address book contacts. The email asked for cash to be sent to a link in order to help out the sender with a sort term cash flow problem. A request for £200 was made and unfortunately one person did not recognise it as a fake and indeed sent the money thinking they were helping out a friend. Please be very careful of any request for money and check with the person whose name appears on the email.

Beware of using a Hotmail email account as it is a very insecure system, easily hacked.



**SATURDAY 9TH DECEMBER
IN YOUR VILLAGE HALL
PROCEEDS TO
CANCER RESEARCH
LOOK OUT FOR THE POSTERS!**



HOLFORD
GARDENERS GROUP

Holford and District
Village Hall

TUESDAY

JANUARY 16TH 7.30pm

*'A Victorian Head
Gardener'*

A Talk by Dr F.E.Burroughs

Members £1.00

Visitors £2.00



HOLFORD
GARDENERS GROUP

**CHRISTMAS
SOCIAL**

Holford and District
Village Hall

TUESDAY

DECEMBER 19th 7.30pm

Members £1.00

Visitors £2.00

⊕ ⊕ ⊕ In Memorium ⊕ ⊕ ⊕

It is with sadness we announce the death of Peter Drummond, a much respected resident of Holford. We send our sincere condolences to Angela, friends and family at this difficult time. The Editorial Team

St. Mary's Church, Holford



We have been quite busy in the last few weeks and would like to thank everyone for their support. On 30th September we held a very successful Harvest Supper. Everyone enjoyed a super buffet and Chris Bult's farming implement quiz was great (and the singing wasn't bad either)!



Our gift day raised £1,000 and this money will be put to great use. The Table Top sale on 21st October was also very successful and people came and both bought and sold.

Many of you may have heard that the Parish Magazine is to discontinue at the end of the year. Although we are quite sad about this it was felt that as the Benefice has now been re-jigged we are not as conjoined as we were. However, efforts are being made to bring out some sort of communication next year. Although details are not yet decided and I am not privy to the workings of such things, it will be a case of 'watch this space'. Thank you all for your patience!

It has been proposed that we hold a Silent Auction next year. We have held these events before and they are always a great success and much fun - all we need are the donations so please support us.

As we head toward the festive season I will remind you of what is in store.

The flower ladies will decorate the church on 15th December ready for our Carol Singing on Saturday 16th at 4.30 pm. This, for those new to the village, is purely a chance to sing and have an enjoyable interlude in your busy schedule. It is not a service merely a get together. At some stage there will be refreshments and mulled wine to prepare you for the second half! In all, it will last just over an hour. Everyone is welcome.

On Sunday 24th December at 3.00 pm Stephen will be leading a Crib Service to which everyone is invited. It's not just for children but parents, grandparents, dogs and all your guests. Do come and celebrate with us - it will be great fun.

On Christmas Day there will be a service of morning worship at 9.30 am as we celebrate the Great Day.

Sue Ayshford - Church Warden



Village Agent Newsletter

Helping you stay warm this winter

Whilst we have had a reasonably mild autumn, winter is now here and many households across Somerset will be bracing themselves for a tough few months ahead, trying to stay warm and put food on the table.

No one should ever have to choose between heating or eating, but sadly this will be the reality for many in our communities.

We are launching our 'Knit for your Neighbour' campaign this month.

We are calling on all knitters, crocheters and quilters in Somerset to make blankets for those in need, helping them stay warm and healthy this winter.

All completed blankets can be dropped off at any of our Talking Café venues across Somerset. Blankets can then be collected through the Talking Café venues as well, or our team of Village Agents will make sure that blankets are delivered to the most vulnerable if unable to get to a Talking Cafe.

If you don't knit or sew, but would like to donate a blanket, we will also accept new blankets with tags on, but we are unable to accept secondhand blankets.

The Community Council for Somerset can support anyone who finds themselves struggling to heat their home at a temperature needed to keep warm and healthy. Among our team of Village and Community Agents, we have '**Energy Champions**' who work closely with the Centre for Sustainable Energy and can offer clients advice on how to stay warm this winter.

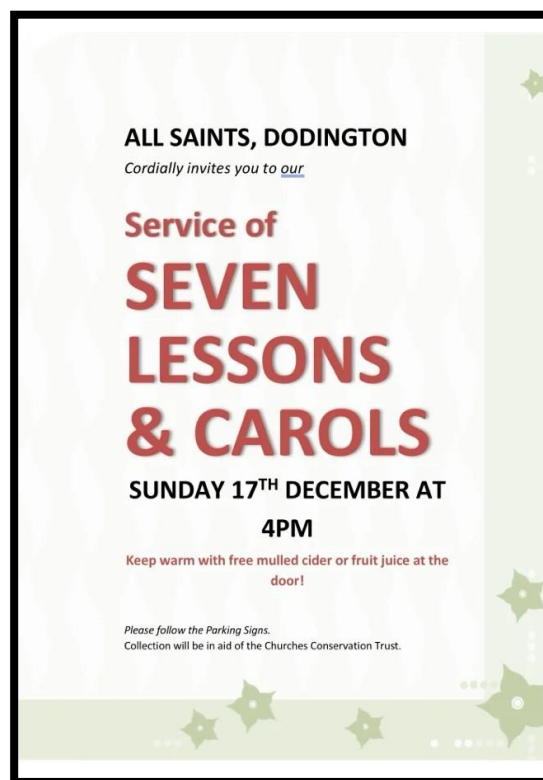
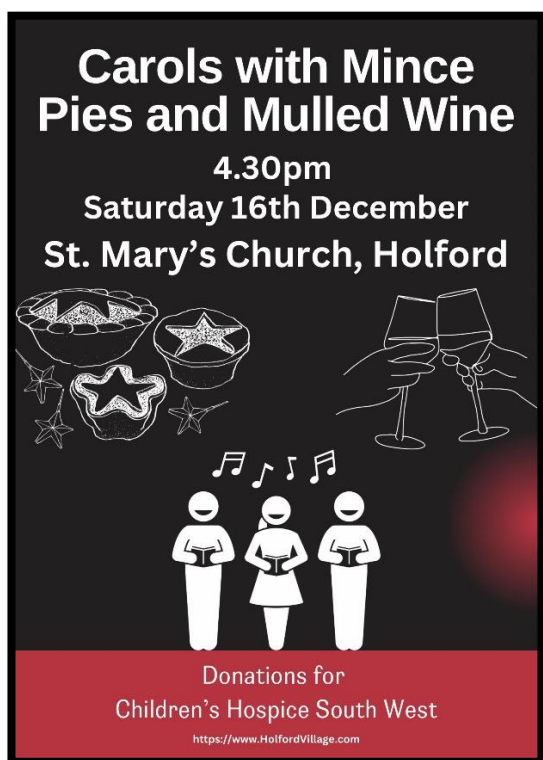
Our Energy Champions can provide support with:

- Boiler efficiency
- Stopping draughts
- Installing thermal curtains
- Making sure there is sufficient flooring
- Checking that you are on the correct tariff and/or moving you to a better one

We can also make referrals to others who can help, such as National Energy Action. Our partners at the Citizens Advice Bureau can help make sure that you are receiving any benefits that you might be entitled to.

If you or someone you know is struggling to stay warm this winter, please pop along to your local Talking Café.

Your nearest Talking Café is: Williton Pavillion every Tuesday 1-3 pm. Please contact your local Village Agent Izzy Silvester on 07931 018045 or email izzy@somersetccc.org.uk if you need free help and confidential advice



November Report QUANTOCK u3a



The Village Hall is used regularly by QUANTOCK u3a.

The Fairfield Room hosts Genealogy and Creative Writing and the main hall is used for Well-being.

Also shown are Qu3a Classic Films. The last film shown was 'Alfie'.

For a touch of seasonal cheer, we have arranged a coach trip to the Wednesday market at the beginning of December.

In January instead of a speaker at our monthly meeting, we are going to be uplifted by the Blackdown HillyBillies but are going to be a wee bit cheeky and

rename them The QUANTOCK HillyBillies for the afternoon!

Please consider joining u3a. We are a friendly bunch of retired and semiretired people who like to 'Live, Laugh and Learn!'

<https://u3asites.org.uk/quantock/welcome>

Christmas Quiz

If you've a good memory, then you'll get a head start as a few of the questions were in last year's quiz.

Good luck and happy Christmas.

1. Which country first started the tradition of putting up a Christmas tree?
2. How many ghosts show up in A Christmas Carol?
3. What Hollywood actor played six different roles in The Polar Express?
4. Which country did eggnog originate?
5. In Home Alone, where are the McCallisters going on holiday when they leave Kevin behind?
6. How many gifts were given in total in 'The Twelve Days of Christmas' song?
7. Where does the royal family traditionally celebrate Christmas?
8. What is the best-selling Christmas song?
9. What country has the most reindeer?
10. What King was crowned on Christmas Day?
11. What year did Mariah Carey's 'All I Want For Christmas Is You' come out?
12. In which country is it tradition to eat KFC for Christmas dinner?
13. How many of Rudolph's fellow reindeers' names start with 'D'?
14. Which city has been donating Trafalgar Square's Christmas tree to London every year since 1947?
15. If you're born on Christmas day, what's your star sign?
16. Which animal carried Mary before she gave birth to Jesus?
17. What is traditionally hidden inside a Christmas pudding?
18. In the episode of Friends 'The One with the Holiday Armadillo', who dresses up as an armadillo?
19. What time is the King's speech traditionally broadcast on Christmas Day?
20. What colour suit did Santa wear until Coca Cola rebranded him in red?
21. According to Buddy the Elf, what are the four food groups elves can eat?
22. How many years do Christmas trees grow for before they are sold?

answers on Page 11



Richardsons' Ramblings

We were back in Scotland in the autumn visiting about the only area we had never been to in 40 years of holidaying north of the border – Dumfriesshire and Galloway, staying in 3 very different areas in the 3 weeks. Our first week was in the tiny hamlet of Durisdeer in the Lowther Hills – in the past we had only seen these hills when whizzing up the M74. It felt quite remote but only miles from the lovely small town of Thornhill (independent shops only) – very quiet except when large shooting parties turned up most days and one day had to wait for 15 plus 4x4's to pass!

Interestingly the *39 Steps* with Robert Powell was filmed in the area with our cottage posing as the post office and watching the DVD we saw the pony and trap come into the hamlet with the nearby ruined Morton Castle making an appearance. The redundant Georgian Church of Scotland would appear to be disproportionately large for the size of the community, but it was built to serve the parish Kirkton for Drumlanrig to include the castle and the large estates of the Dukes of Queensbury. Reverend Bill Scott was the incumbent for 55 years till 2008 – not likely to happen at any church now! Judging by the 33 names on the WW1 memorial there were more people living there a 100 years ago. The Romans built a road right through Durisdeer into the hills following the River Clyde north with a nearby fortlet.



One day we drove up the very scenic route to Wanlockhead at the head of the Mennoch Pass, being the highest village in Scotland and an old lead mining area. The local inn was a bit of a surprise as it was obviously for bikers, as you can see!

We visited the most extraordinary Crawick Multiverse near Sanquhar. A while ago I had read about the Garden of Cosmic Speculation at Portrack House near Dumfries but realised that it was only open to the public for 1 day a year. These 2 landscapes were the vision of landscape designer, Charles Jencks (1939-2019). Crawick Multiverse, 55 acres of it, was created by using materials found on the old open cast coal mining site. The huge landforms depict the universe and reflect cosmological theories. Putting that to one side we had an enjoyable day exploring and climbing up spiral walkways. Andromeda and Milky Way were just 2 of the spiral galaxies standing at a height of 25m topped by boulders. What an amazing creative vision Charles Jencks had!



The rescue of Dumfries House has been well documented, and we felt we must visit it. This time we missed out on seeing King Charles, as we did last year in Ballater, but he was there only days previous opening a new educational facility. It was so nice to walk Ella through all the gardens, not like many places where there are restrictions and all for free. We separately joined pre-booked house tours and well worth the cost. Children have the most wonderful play area with this magnificent tree house. It made for a very relaxing last day for us in NE

Dumfriesshire and the sun shone.....well, most of the day!



Obituary Suzanne Browning

On 5th November family, friends from far and wide, including Airedale owners joined local friends in Holford village hall for a cream tea to celebrate Suzy's life – she passed away on 11th October after a short illness. Graham had put together the most amazing collection of photographs and articles all round the hall including the family tree Suzy had researched right back to the 17th century and a board of photographs and information on Airedales that served in the First World War. I am sure I am not alone in picking out the most memorable photograph of Suzy's legs – what a great pair!

Suzy was very much a Somerset lady, born and bred in the county then returning to live and work here after teaching in Lincolnshire. Initially she worked in the Midland Bank before teacher training beckoned, having been interested in teaching from grammar school days. She met Graham on a blind date, and they married in 1968. After teaching in Grantham, they moved back to Somerset with Suzy as Deputy Head at Stogursey rising to Head Teacher at Enmore Primary School.

Dogs had always featured in Suzy's life, growing up with an Airedale as her mother had. It was a natural progression for her to show and breed Airedales, with help from her sister Jill. As her maiden name was Voaden her prefix for registering the puppies with the Kennel Club was Avoden. Needless to say the puppies only ever went to very suitable owners. She was so successful that Klondike, her Champion stud dog went to Australia and went on to be Champion there. We came to know Suzy and Graham on moving here 20 years ago. They knew we had had Airedales so invited us for coffee and to watch puppies playing in their play area and what fun they had with slides, little jumps, boxes, balls and so on.

Suzy was heavily involved with St Mary's Church in Stringston and until recently was a key person on their Parochial Church Council serving as Churchwarden and provided much needed help in the running of the Church. She was a regular member of Holford Gardeners Group helping when she could, particularly with the Flower Show.

The West of England & South Wales Airedale Terrier Club was also a huge part of Suzy's life with her serving on the committee for many years helping to organise shows and events. One role was looking after Airedale Rescue and that was how Lena came to live with us in 2004. Through her various contacts from the show ring, we re-homed Hebe and 3 years ago Ella. Locals would often see Suzy, Jill and myself walking a collection of Airedales. What Suzy didn't know about the breed wasn't worth knowing!

Suzy was an incredible lady and is greatly missed by her close family and all her friends.

Gae Richardson

Table Top - Good as New Sale Holford Village Hall



This event took place on Saturday 21st October in the Holford & DVH, proceeds from the admissions, raffle, the Holford PCC cakes and bargain stall and general table hire came to a grand total profit of £340.05 helping to boost funds for Holford church.

I'd like to thank all those that donated some really

good raffle prizes, namely The Combe House Hotel, The Plough Inn, with other prizes donated that included bottles of wine, chocolates, car cleaning kits and some lovely goodies that were made up into hampers. Thanks must also go to the ladies in the kitchen, the girls who helped with admissions and raffle ticket sales, (we couldn't have done it without them!) our resident village sign writer for providing our roadside advertising....and finally the important stall holders who I understand made a few sales, despite the weather which in turn affected the number of people coming through the doors, however it was all for a worthy cause and an enjoyable day. Thank you.

Mo (Plomgren)

Christmas Quiz 2023 Answers

- | | |
|---|---|
| 1. Germany | 12. Japan |
| 2. Four | 13. Three - Dasher, Dancer and Donner |
| 3. Tom Hanks as Hero Boy, Father, Conductor, Hobo, Scrooge, Santa Claus | 14. Oslo |
| 4. Britain | 15. Capricorn |
| 5. Paris | 16. Donkey |
| 6. 364 gifts | 17. A silver coin |
| 7. Sandringham Estate | 18. Ross |
| 8. White Christmas | 19. 3pm |
| 9. Norway | 20. Tan |
| 10. William the Conqueror | 21. Candy, candy canes, candy corns and syrup |
| 11. 1994 | 22. Between six and 10 years |

MEDITATION CLASSES

Ever been curious to learn what meditation is all about?

Come along to our friendly, informal community meditation group and find out

Far from being an exclusively spiritual practice, meditation can have a huge effect on our:-
emotional states
stress levels
clarity of mind
relationships with others.

It can be a useful tool in helping us cultivate:-
greater awareness in the body
resilience to life challenges
compassion towards others.

After meditating, my anxieties, stresses and irritations lessen and become manageable

Helen

I had a sense of being away from life's challenges crowding me.

Mo

The stillness and peace that I find within when meditating bring a calming feeling to my mind, body and soul.

Lorraine

Classes are led by a member of the Alfoxton Community
Holford Village Hall Tuesdays 11.00-12.00
free entry, donations appreciated

to enquire or to book, contact Helen: quantockstudio@gmail.com 07849 408753

Poem by Ted Hughes daughter Frieda

Our hearts are ticking clocks; 25 years ago today my father's stopped.

I remember him younger than his death date at only sixty-eight, explaining

The speed of light or naming the constellations; his voice remains

As clear in my memory as when he walked the earth in search of poetry.

And an old friend died on Westminster Bridge on his way to a boat party.

His last act as cartoonist was to sketch himself standing alone in the dark

Waving goodbye from the pier to a boat he would not catch

As it left without him. So, I thought of the value of time as I sat in a car queue

At the flood's edge of a storm in mid Wales on Friday.

Run-off from the fields made rivers of the roads, and for some reason

The cars that blocked exits as their engines failed, were BMWs.

I was conscious that the stoppages ate hours I could not retrieve; how long is a life

That can accommodate wastage? During delays, hold-ups, traffic jams, hours in A&E

While not being seen, being put "on hold" indefinitely by any faceless company

And HMRC without hope of an answer, or being lined up for anything in which

I am trapped and stationary, I hear the soft, persistent sigh of accumulating minutes

Gathering speed and momentum, passing me by, becoming hours, days and more,

Of empty life in which nothing is achieved, not even a sense of "being".

The theft of my time, your time, their time, should be a chargeable crime

Stopped at source and not only in the spotlight of our end.



Holford Parish Council Chairman's report November 2023

We have some good news as far as Parish Councillors as we now have 2 places filled by Stephen Campbell and Reuben Morris. They are very welcome as there is quite a bit going on. However, sadly, Stuart Moffatt has had to resign as, due to working away and family commitments, he is unable to spend as much time as he would like. I would like to extend my thanks to Stuart, he has been a very valuable member of the Council. This means that we still need two more volunteers!

We held an extraordinary meeting in September to enable us to hear your views on the new planning application for a further 100 caravans at a site adjoining the current Moorhouse Farm site. 24 people (including Parish councillors) attended that meeting and many expressed their opinions. A list of questions had been posed to the applicant before the meeting, and the responses to these were read out.

After listening to everybody and reading the information available, the Parish Council determined that we were not in favour of the current application for a number of reasons including that there was no evidence to support the view that it adds value to the local economy and concerns over the increased traffic that would be created together with the ecological issues. The application will now be decided by the Somerset West Planning Committee West on 21st November.

Roadside poles for Speed Indicator Devices have been ordered from Somerset Council and we hope these will be installed speedily.

Holford councillors have attended and contributed to meetings of the Hinkley Point Community Forum, the Quantock Hills Advisory Committee. and with the Clerk, the newly formed Local Community Network, Dowsborough, of which Holford is a member together with 15 other local parishes. The Chairman attended a meeting held by the Police and Crime Commissioner. Substantial progress has been made by the police on tackling anti-social behaviour and knife crime with the newly branded Violence Reduction Partnership, but traffic and local policing remains a concern to many of the attendees. Specific traffic issues have been followed up with the PCC as we endeavour to improve the quality of life on our village roads.

The volume of reports that we receive on a monthly basis from such bodies, as well as from Somerset Council is formidable and we need to work out a way of providing relevant information to parishioners.

The management of a Parish Council is becoming more complicated as the way we operate is quite strictly controlled. Our clerk has completed her Introduction to Local Council Administration qualification, and also completed 'budget for council clerks' and GDPR training. She will shortly start an essential Financial Introduction to Local Council Administration course. This will help councillors work within the legal framework.

Updates:

Moorhouse Farm Planning Application

The Somerset West Planning Committee West met on 21st November and the application was approved despite the number of objections. Our local Somerset Councillor, Rosemary Woods, was the proposer to agree the application.

Somerset Council

Somerset Council has declared a financial emergency and is currently looking at the non-statutory services it currently provides and is asking Parish and Town councils to consider financing such services. This will be a serious issue for all ratepayers in Somerset.

Flooding

Concerted pressure by the PC to Somerset highways has resulted in many of the gullies on the A39 being cleared of grass and mud. There are some still buried but the work done should help to reduce standing water on the A39 during heavy rain. We do have a map of all the gullies in Holford and if one near you is blocked up please let me know so I can group them all together to get them cleared for winter.

Mike Copleston



**Holford Christmas Card
Delivery Service**

**Keith and Sue Edwards will be continuing
with the Christmas card delivery service
in Holford this year, with the help of
Erl and Mo.**

**The post box will be in the church porch
from the 7th to the 16th of December and
the cards will be delivered around the village
towards the end of the week. Cards can also
be left at “Westering” or “Lady Charles
House” between the same dates, to be
included in the delivery.**

**Please make sure that a house name/No. is
included on the envelope to aid delivery.
Just a name is frequently not sufficient.**

**Although we do not charge for this service,
donations are very welcome and the monies
collected will be given to the Friends of the
Dorset and Somerset Air Ambulance.**

Sue & Keith Edwards

<https://www.HolfordVillage.com>



All designated **Areas of Outstanding Natural Beauty (AONBs)** in England and Wales are becoming **National Landscapes**, including the Quantock Hills National

Landscape. The new name reflects their national importance; the vital contribution they make to protect the nation from the threats of climate change, nature depletion and the wellbeing crisis, whilst also creating greater understanding and awareness for the work that they do.

This is a significant milestone for the UK and the next step in fully realising the National Landscapes' vision to be the leading exemplars of how thriving, diverse communities can work with and for nature in the UK: restoring ecosystems, providing food, storing carbon to mitigate the effects of climate change, safeguarding against drought and flooding, whilst also nurturing people's health and wellbeing.

National Landscapes teams have been at the forefront of delivering natural solutions to the main challenges facing the nation for many years. The new brand underscores their commitment to redoubling their efforts and engaging with a wider audience. In 2019, teams set themselves the most ambitious targets for nature in the sector and continue to work to meet them.

By 2030, National Landscapes aim that, within their boundaries: at least 200,000 hectares of the most valuable natural areas (Sites of Special Scientific Interest or SSSIs), which equates to 1 ¼ times the size of London, will be in favourable condition; 100,000 hectares of wildlife-rich habitat outside of SSSIs will be created or restored, which is roughly nine times the size of Manchester; and 36,000 hectares of woodland, which is a little smaller than the Isle of Wight, will have been planted or allowed to regenerate. National Landscapes Partnerships will also focus on habitat restoration to ensure the protection of some of our most endangered species and increase their work to help more people to enjoy time spent in beautiful places.

Because of their size and scope, National Landscapes are ideally positioned to address the environmental issues the UK is facing. There are 46 National Landscapes in the UK, covering 14% of England, Wales and Northern Ireland including moorland, farmland, coast, forests, including UNESCO World Heritage Sites, Biosphere Reserves, a Geopark and

International Dark Sky Reserves. They are the UK's nearby countryside - 66% of people in England (44 million) live within 30 minutes of a National Landscape and at least 170 million people visit them every year.

Iain Porter, Quantock Hills National Landscape Manager said:

"Since our designation in 1956 (England's first) the Quantock Hills has inspired and enthralled our communities and visitors alike. Renaming to National Landscapes reflects the importance and value we place on these special areas and empower us all to deliver more for nature and climate, for our heritage and culture and for the people who live and work here."

John Watkins, Chief Executive of the National Landscapes Association says:

"For decades, AONB teams have convened powerful partnerships which have placed them at the forefront of the fight against climate change and biodiversity loss, but since their initial designation, our country has changed immensely, as have the needs and pressures on the environment and communities. However, we have great ambition as well as the commitment and readiness to care for and protect these important places, whilst also extending a welcome to more people. Our ambitious aims build on AONB teams' long track record of successful delivery for nature and people and we are confident that we will achieve them. National Landscapes are the landscape designation for the 21 Century and beyond."

Tony Juniper, Chair of Natural England says:

"For decades the AONBs have helped protect the beauty of our finest landscapes. Today though we need so much more from these wonderful places, helping us adapt to climate change, catching carbon, restoring depleted wildlife and encouraging more people outside, at the same time as producing food, sustaining local communities and enhancing historic environments.

"Modern challenges require new approaches and today marks the beginning of a new phase for our National Landscapes, as they strengthen their existing partnerships, and forge new ones that will secure in perpetuity the huge range of benefits that come from these special places. Big change has taken place during the past 75 years and bigger changes still can be expected during the decades ahead. Uniting the National Landscapes in this way is very welcome and spells immense opportunity and great hope for the future."

If you would like more information please contact Iain Porter, Quantock Hills National Landscape Manager.

iain.porter@somerset.gov.uk 07977 412077.

Oil delivery Scheme

Time to stock up again?
For those wishing to make use of the community oil delivery scheme, orders will need to be placed by Monday for deliveries in the following week, usually on Wednesday

Please put these order dates on your calendar

Mon 11th Dec, Mon 18th Dec,
Tues 2nd Jan, Mon 22nd Jan and
Mon 5th Feb.

But you can contact David at any time :

David Young on 741249
davidyoung1934@talktalk.net



Lottery
The Lottery is up and running again!

Winners

October

Winner (£30): Andrew Mew
Runners-up (£15): Philip Brimson;
Christine and Steve Prater

November

Winner (£30): Stephen Campbell
Runners-up (£15): Wendy Pocock;
Louise Russ

Refuse collections :

Every **three** weeks on Fridays
Collections a day later after
Bank Holidays

Recycling collections

every Friday
Collections a day later after
Bank Holidays

Holford and District Village Hall

What's On? – Dates for your Diary



For full details see the
Holford and District Village Hall website
www.HolfordVillageHall.org

Bookings : Emily Hecksher T : 741694
or on line at www.HolfordVillageHall.org

VARIOUS REGULAR EVENTS PLANNED
BUT DO CHECK THE VILLAGE HALL WEBSITE FOR THE
LATEST INFORMATION

Mon	2 nd Monday in the Month U3a Genealogy	2pm
	Yoga	6pm
	Short Mat Bowls – Kilve Village Hall	7.00pm
Tue	Pilates – note : 3 rd Tuesday of the month is Gardeners' Group	5pm and 6pm
Wed	Kundalini Yoga	6.30pm
	Every other Wed U3a Wellbeing	
Thu	Table Tennis	7.30
Fri	Art Group Craft Group	10.00 – 1 pm 1.00 – 4pm
Sat	Monthly Coffee Morning First Saturday in the month	

We hope you have enjoyed this edition

If anyone has any articles, ideas, news,
snippets etc please do let us have them.

before the deadline January 14th

Please send items for the next issue to

EmmaCavendish01@aol.com

Publication date February 1st

**Please don't send pdf files or images and
text directly from your phone –
these are very time consuming to edit.
Save your photos to a jpeg file.**

Emma