

Holford news & views



January - February 2021



Editorial Having just scanned the submissions for this edition of Holford News and Views, I can say that there is an interesting and diverse range of articles this time. Well done and thanks to all contributors. One or two items have been held over for next time so don't be disappointed if you can't see yours!

Trying to keep positive during yet another lockdown is not easy but to quote a well known elderly gentleman 'Things will get better..tomorrow will be a better day'.

Which day was not specified but we must live in hope. One cautionary tale to note... apparently there has been an increase in the number of scamming /hoax calls during the last few weeks. Residents have been pestered by scammers who have been trying to extract information about bank details, addresses etc. We all know that we shouldn't take any notice, give them a flea in the ear and hang up but I think there must be a training school for such people. No matter what our rational brains tell us, it is easy to get drawn in and start a conversation. Don't, it's hard, especially now when having a chat or conversation is not the norm but it is one of the rare occasions when we are allowed to be rude and end the call. The Police Community Support Officer's report is in full in this edition.

On a more optimistic note, humans hiding in their homes has been of great benefit to the wonderful wildlife around us. A few days ago a rough legged buzzard was seen cruising around in the Dunster area, apparently a rare sight in Somerset.

On a slightly more mundane note, I'm looking forward to getting into some serious spring cleaning(?!), meet people, have conversations in real time, confident in the knowledge that we have all been vaccinated and are safe from the plague for the time being. Please let us know how you have been spending your lockdown and what you are looking forward to when it is over.

Finally, my apologies to all the neighbours who have had to endure the sound of Sidney's barking. He is making progress in a bid to become a pleasant member of the Holford canine community but sometimes reverts to his feral roots. Chris Mew

Welcome to our Bumper edition! Here's hoping 2021 will be a better year for all and we can finally beat this awful virus. Best wishes from all the News and Views Team.

Prescription pick up / delivery is available again from Quantock Medical Centre and Cannington Medical Centre on Fridays and if anyone needs help with their food shopping please get in touch with the Parish Council Clerk on 078180 15956

This edition of Holford News and Views is kindly sponsored by Kilve Village Stores



Obituary Michael Beaton

Dear All

It is with much sadness that we write this letter to let you know that our father Michael Beaton has passed away just after Christmas on the 28th December. As you may know, he was diagnosed with vascular dementia some time ago, our mother was also recently diagnosed with Alzheimer’s disease. They had become quite frail and in August 2020 they moved into a Nursing home in Wellington Somerset.

Unfortunately our father contracted Covid-19 and became ill on Boxing day, dying peacefully at Linden House a couple of days later. Our mother also has Covid-19, but has not been affected so much by this, however the impact of our father’s death and the COVID restrictions on visiting and contact make this so difficult for her and all of us. We are so sad Michael is no longer with us, but we are relieved to know he had a peaceful death with my mother at his side.

Due to the Covid restrictions (and no doubt tighter ones shortly) and my mother being unable to attend the funeral because of this; we will be holding a private small family only committal burial service later on in January 2021. We are sorry if you were considering attending, however, we hope to have a celebration service for Michael at St Mary’s Church in Holford in the summer, when Jocelyn can attend with the freedom for all of us mix without restrictions.

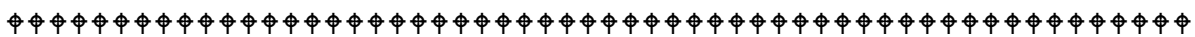
Please do write to Jocelyn if you are able as this will give her a great source of comfort, her address is:

**Linden House Nursing Home, Linden Hill, Westford, Wellington, Somerset.
TA21 0DW**

We are so sorry to have to bring you this sad news and hope to be able you will be able to remember happy times with our father. If you need any further information, please don’t hesitate to contact us.

Sincerely

Sally Hebelor & Catherine Beaton



Church News Holford Church Gift Day Appeal

Dear Friends,

Holford PCC would like to say a heartfelt sincere thank you to everyone who contributed to the recent Gift Day Appeal. The total to date is £1,992 but it is not too late if you would still like to contribute.

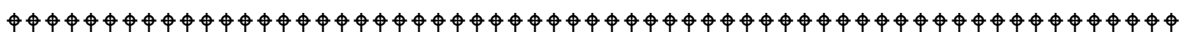
Just to pay our share of the common fund to the Diocese of Bath and Wells we needed to raise over £7,000 for the year 2020 and that does not include any other commitments like insurance and the upkeep of the churchyard. That is why we are so grateful for any donations and especially this year when we have been unable to have any fundraising events because of the Covid19 virus.

As some of you may realise St Mary’s church has struggled financially over the last few years but we will continue to try and keep the church and churchyard open and are so very grateful to those who have generously donated to church funds.

If you would like to donate, please contact the Churchwardens :

Sue Ayshford and Jenny Swash or myself (as PCC treasurer).

Thank you once again **Ann Steer**





Police Community Support Officer's Report

We are concerned about the regularity of scams either emails, phone calls or bank scams. Please can you remind residents of any age that we are all very vulnerable. Never give your bank details to anyone! If you believe you have been scammed with anything to do with money, notify your bank immediately so they can stop transactions.

Fraud is another issue especially charities which many people like to donate to, always get as much information as possible before giving your details. Preferably, ask them to send you paper work so you can view it. With the Covid lock down again, there are many lonely people who may start to form relationships online. We have known people to lose money through these sites. Victims form a relationship with someone pretending to be forming a relationship with the victim and then asks for money to help transport to meet up with him or her. Alternatively, the perpetrator find reasons for the victim to help fund something they would like, this is when money starts to be taken out of accounts and transferred into a bogus account. Before the victim knows it, their life savings have gone and there is no bank account to find where the money has gone.

As everyone is aware, the Covid lockdown is now happening. There are still people who do not know the correct rulings please can local residents assist some of our elderly and people who do not have a computer by printing out the new rules as I believe some people find it hard to understand what they are allowed to do www.Gov.uk

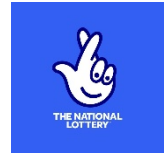
Can you all be mindful that although we have lock down there are still people out and about looking to see if there are any shed, business premises, or lock ups that may be of interest to them. If anyone happen to see or hear anything suspicious, such as vehicles or people. If at all possible try to get a vehicle registration. 'Please do not put yourself in any danger.'

On a brighter note :



CHRISTMAS IN HOLFORD

After posting notices around the village before Christmas, these are just a few lines to thank all those villagers who kindly took the trouble to make our village look so pretty and cheery over the festive season, with their Christmas tree lit windows and decorating their houses and gardens with fairy lights! It all looked quite magical, so we decided that due to the somewhat 'gloomy' of times we are living in, instead of packing them back in the loft, we are keeping a few lights up in a tree in our front garden - in the hope that they will brighten up the Easter weekend! Erl & Mo Plomgren



KILVE STORES

Proudly Supporting all our Friends in Holford

Shop Opening Hours

Monday – Friday 7.30am – 5.00pm
Saturday – 8.00am – 5.00pm
Sunday – 9.00am – 1.00pm

Post Office

Mon, Tues, Thurs, and Friday – 7.30am – 5.00pm
Wednesday 7.30am – 12.30pm
Saturday 8.00am – 12.30pm
Sunday – Closed

Fully stocked, no shortages at Kilve Stores. Glenmore Bakery bread
Fresh Milk and Fruit & Veg Daily.

Premier Special Offers – Logs & Kindling – Calor & Flo Gas stockist
National Lottery & Scratch Cards.

Local Cheeses, Fresh Meat, Butter, Cream

Large selection of frozen goods – Pet Food Corner including wild bird food
products

Cheapest Coal Supplier in the area?

Free local delivery when you order ten bags and discounts for bulk orders!!

We deliver Newspapers & Magazines 7 days a week to a box in Holford. Get in
touch if you would like to set up a delivery

New to Kilve Stores

Frenchic Paint Stockist – Get in touch for more details



Remembering the Beast

It was Thursday morning 1st March 2018 and the imminent arrival of the Beast from the East, like Genghis Khan eight hundred years before it, was predicated on the bitter cold and lowering skies.



Two days previously an intended car trip to Taunton had come to nothing when my long-suffering Peugeot declined to start citing a broken fuel pump as an excuse. The AA agreed. Soon afterwards they loaded it up and hauled it off to the dealers who predicted an eight day wait before it could be squeezed into the workshop; such was the extent of their workload.

So, collecting a couple of shopping bags and well wrapped-up, I crossed the road to the bus stop intent upon a trip to Watchet for some essentials to last a few days while the Beast and the dealer did their worst. No bus came. Undaunted, and recalling

from university days how to hitch-hike, I tried my skill on the occasional car emerging from behind The Plough, but all the drivers had either tunnel vision, or viewed me as a vagrant or a terrorist or a kidnapper or a highwayman or all of those things. Then, after some thirty minutes a passing surveyor in a warm Barbarian took pity and, as the snow started to fall, we swapped a few stories before arriving in Watchet where he had an appointment.

The Watchet Co-Op had been laid siege to. The food shelves were almost bare. Gold-topped Guernsey milk and vegetarian sausages begged me to take them home rather than remain there unwanted, lonely and sad. How could I resist?

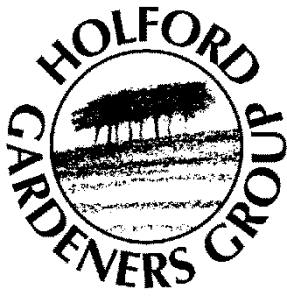
Then in deepening snow I joined two others at the bus stop for the return to Holford. All three of us started to fear that there would be no bus. A passing snowperson delighted in telling us she had heard on Somerset Radio that all buses in the county had been suspended since mid-morning on account of the weather. My two would-be travelling companions quickly left the bus shelter and vanished into the worsening blizzard without even saying they were going outside and might be gone some time. I made it to the West Somerset Hotel, ordered crisps and a beer (they had no food) and started ringing for cabs. With one accord they reported that no fares were being taken out of the town for fear of becoming stranded and unable to get home. There's only one thing for it I thought. I'll just have to walk. I've done it before, but not in the snow. I should make it back before dark. Chances of being mown down by a lorry or bus on the vergeless road sections were slim.



So climbing the hill to the railway bridge I thought I'd just pause a while in case any vehicle was venturing out and going my way. I'll give it ten minutes I decided; then I'll start walking. A Range Rover crept by ignoring my thumb. Just as I was about to get going again a small car stopped, the window wound down and a cheery voice asked where I was off to. That he was going to Holford just like me seemed unbelievable. Brushing myself down I climbed into the back and poured out my thanks. It took half an hour of careful driving in deepening snow on a silent and empty road via Williton to avoid the steepest hill, but eventually we reached The Plough safely..

So to Carl of Green Close I give my most sincere thanks for his humanity. To Linda McCartney for her sausages I can only offer my sympathy.

Thanks to Tony Betteridge



Members of the Holford Garden Group committee, met (in her garage /woodstore!) to thank Gae Richardson, for her many years of service to the group. Gae has just retired from the committee after



over 14 years service to the group including as treasurer and secretary as well as organising the annual Flower Show. The committee thanked her and presented a gift card and flower arrangement. Her organisational skills and commitment to the work of the group will be greatly missed.

We hope to see both Gae and Mike when the Garden Group meetings restart next year.



QUITE A FEW THANK YOUs!
From Mo Young

To the Stanley family, the Forsyth family, and Stewart and Alina for putting up and taking down the Christmas Lights and doves at the lychgate.

To Midge and Hema for producing 'welcome to Holford' cards. The cards have website details of the Parish Council, the Village Hall, David Talling's Village website and the Deanery website. If you have a new neighbour please contact maureenyoung@hotmail.com

To Holford's Speedwatch volunteers. They have reported 70 speeding vehicles travelling through Holford to Avon and Somerset Police. More volunteers always needed. Not onerous – just one hour per week working as part of a friendly team. Lovely free yellow jacket and cap. Please contact Mo Young Coordinator, for more information.

To the Village Hall Committee and Marilyn for keeping our Hall Covid secure. Hopefully the hall will be open again in the Spring. We are revising the village hall's contact list. If you wish to receive news of future events etc. Please email maureenyoung@hotmail.com

To neighbours who donated toiletries to the Quantock Food Bank. A little extra in hard times and much appreciated.

Brain Teasers : Answers on P11

Now we're all in Tier 4 and some of us are probably shielding indoors, it made me think of numbers, so here are a few riddles with a numerical twist. Some easy, some a real brain teaser. They'll help get you through the day, or at least your coffee break. I take no responsibility if you throw your coffee cup at the wall and break it! Mike Richardson

1. What 3 positive numbers give the same result when multiplied together as when added together?
2. Using only addition, how can you add eight 8s to get the number 1,000?
3. Three friends check into a motel for the night and the receptionist tells them the bill is £30, payable in advance. So, they each pay £10 and go to their room. A few minutes later, the receptionist realizes he has made an error and overcharged the trio by £5. He asks the porter to return £5 to the 3 friends who had just checked in. The porter sees this as an opportunity to make £2 as he reasons that the three friends would have a tough time dividing £5 evenly among them; so he decides to tell them that the clerk made a mistake of only £3, giving a pound back to each of the friends. He pockets the leftover £2 and goes home for the day. Now, each of the three friends gets a pound back, thus they each paid £9 for the room which is a total of £27 for the night. We know the porter pocketed £2 and adding that to the £27, you get £29, not £30 which was originally spent. Where did the other pound go?
4. The day before yesterday I was 21 and the next year I will be 24. What day is my birthday?
5. I am an odd number. Take away a letter I become even. What number am I?
6. Peter is 54 years old, and his father Joe is 80. How many years ago was Joe three times the age of his son Peter?
7. There are several books on a bookshelf. If one book is the 4th from the left and 6th from the right, how many books are on the shelf?
8. What do you get when you divide 30 by $\frac{1}{2}$ and add 10?
9. A farmer has 17 sheep and all but 9 die. How many are left?
10. There are two ducks in front of two other ducks. There are two ducks behind two other ducks. There are two ducks beside two other ducks. How many ducks are there?

To cheer us up in the midst of a cold and wet January –
A reminder of sunnier, freer times when we opened the garden to visitors!

WINSORS FARM MEADOW

Here are some flowers and wildlife to look out for in late June
(all pictures taken in the meadow)

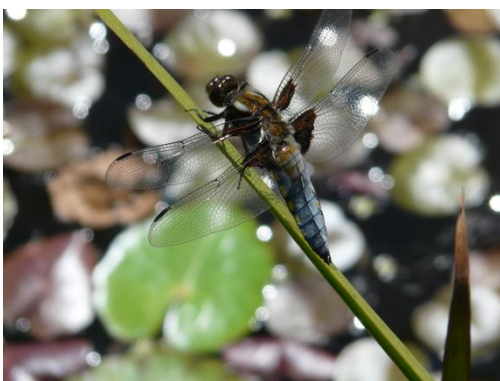


Ox-Eye Daisies and Birds Foot Trefoil are in full flower. Meadow Cranesbill, Common Knapweed and Field Scabious are starting to appear.

The first Meadow Brown butterflies should be in flight. Marbled White butterflies feed on Knapweed in July. Occasionally they appear in June.

Ringlet butterflies start to emerge in late June and can be seen in the deeper grass on the edge of the copse.

The number of Common Spotted and Heath Spotted Orchids has grown from year to year. They flower in early June but some should still be in flower in late June. About 10 Pyramidal Orchids appeared unexpectedly in 2014 and these should be in full flower in the centre of the meadow.



A male Emperor Dragonfly (right) is likely to be patrolling over the pond and the female may be egg-laying. Broad-bodied Chasers like this male (left) are often seen perched on vantage points.



We hope you enjoy our story. If you would like a tour around the meadow when the warmer weather arrives please do contact Peter or Emma

MEADOW DEVELOPMENT AND MANAGEMENT

This is how the meadow looked when we moved to Winsors Farm in 2006. The few remaining apple trees all blew down in the storms of December 2006. Since then we've established a traditional hay meadow with fine grasses and wild flowers but with an 'orchardy' type feel. We've also added the pond and a copse to maximise the bio-diversity. In 2013 Somerset Wildlife Trust granted us the status of 'Wildlife Garden Reserve'.



The wildlife pond was constructed in 2011. We haven't introduced any wildlife,, it's all arrived of its own accord. Within the first year we had frogs, toads and newts and visits from Grey Wagtails, a Common Sandpiper and Swallows swooping down to drink. In 2012 a Hoopoe dropped by to take a look around and Mandarin Ducks (Male and Female) have visited this year.

The meadow is left to its own devices most of the year. In late Summer/early Autumn it is scythed and all the hay is removed so that the fertility is gradually reduced. This has virtually eradicated all the coarse grasses. Yellow Rattle has also been used to reduce fertility and benefit the fine grasses and wild flowers.



A list of flora and fauna is shown in Appendix 1 at the end of this newsletter



NEWS FROM YOUR VILLAGE HALL



Village Hall Update

The various stages of lockdown necessary to combat COVID-19 have resulted in the hall being completely closed so there's not a lot to report. The hall is inspected each week by Andrew Mew, our health and safety officer, but if you see anything untoward at any time please contact him on 741437. We look forward to some point in the future when it will be safe to re-open and when we can welcome back all of our regular users.

There seems to be a growing desire to have a big party once COVID is under control and I would be keen to hear of any ideas you might have that would bring the whole village together for a celebration. It may have to be a masked ball!

Following the AGM we welcomed our new trustees Steve Keirl and Stephen Philp, both of whom are getting a better understanding of managing the Hall. The AGM was also the point where we said goodbye to long serving trustee Michael Beaton. Little did we know Michael would have such a short time left. We send our condolences to Jocelyn and his family and thank him for his many years of service to the village hall.

Please stay safe everyone

Alan Falkingham Chair



Somerset Micro Providers

Not many people may know of the army of registered professional self-employed people that can offer care and support within your home. Since 2015 self-employed care workers have signed up to the community catalysts programme, founded by Somerset County Council. The programme which supports people in their own homes, enabling hundreds of people to remain in their familiar surroundings. The scheme has proved successful as now the membership has grown to over 360 micro providers, working across Somerset today.

What makes this level of help different is micro providers can offer a friendly one to one level of affordable care, tailored to customer's needs. The micro provider can plan their work Rota so that they can meet the times that customers want them to arrive, having a familiar friendly face, has also benefited customers and has taken the stress out of getting the professional care that they need. Micro providers are local to their area and can support each other when cover is needed for sickness or holiday leave.

For micro provider to join the accredited scheme they must be DBS Checked, have appropriate training, relevant insurance, and policies and procedures for their services.

What do we do? Anything and everything to enable someone to stay at home. We can be cleaners, carers, dog walkers, and gardeners.

There is a full list of micro providers on the Somerset County Council web site and your local Village Agent knows who works in your area.

Hello

I am the new lead for the West Somerset Micro-providers who are working across the area. As you can see from the information above, we work directly with those who are needing care to enable people to stay at home or offer support on a wide range of issues. We are all independent but accredited by the council who support our work and ensure that we follow the same set of rules and standards. This year of course has been quite different for all of us and again concerning for us all, especially those that are considered vulnerable and or living alone. Throughout this pandemic Micro-Providers have kept working and have done so safely, and at this time enabled medical staff to prioritise their provision to the community because Micro-Providers have been able to carry out the care needed for many in the community.

Something that concerns us all is the "loneliness" that many people have suffered and the mental health of so many that has been compromised. We see this throughout our work and of course it is not just in West Somerset. However, geographically West Somerset is, of course, often remote and has an ageing population that are often restricted by not using modern technology to "keep talking".

As Micro-Providers we want to enable the local community to collectively work together throughout the remaining time of the pandemic but also for the future. Having researched and listened to the community we feel that "Communication Benches" where people are able to sit and talk outside will help break down the isolation.

Thank you for your time. For any more information on Micro Providers across West Somerset please contact - Vicki James on 07475 803652



Answers to the Riddles

1. 1, 2 and 3.
2. $888 + 88 + 8 + 8 + 8 = 1,000$.
3. There is an initial £30 charge. It should have been £25, so £5 must be returned and accounted for. £3 is given to the 3 friends, £2 is kept by the porter – there you have the £5. The trick to this riddle is that the addition and subtraction are done at the wrong times to misdirect your thinking – and quite successfully for most. Each of the 3 friends did indeed pay £9, not £10, and as far as the friends are concerned, they paid £27 for the night. But we know that the receptionist will tell us that they were charged only £25 and when you add the £3 returned with the £2 kept by the porter, you come up with £30.
4. 31st December. It must be the 1st January, when I turned 22 and so 21 the day before. As it is now a new year, I will be 23 this year and so 24 next year.
5. Seven.
6. 41 years ago.
7. 9 books.
8. 70.
9. 9.
10. Four ducks (in a square).



A bit of a head-scratcher to get the grey matter throbbing!

One hundred years ago - From the Times Archive – November 9th 1920

At the meeting of the Aristotelian Society last night, the Very Rev W R Inge, the new president, set a puzzle for the philosophers. He said that it was possible to compare the sequence of events in time with a cinematic film. This was presented to us moving in the direction which we regard as normal. But it was possible to throw it on the screen in the reverse order.

We might see, for example, a public swimming pool with unruffled surface broken by a splash, followed by the emergence of a pair of feet, next a human body describing a graceful upward curve, until a bather with uplifted arms stood on the margin of the pool in the attitude of one preparing to dive.

It was already clear that any particular event in a time series might be past for one observer while it was still future for another observer. But *our* perception was always of the past. One person heard a church clock two seconds after it was heard by a listener standing closer to the place where it had been striking. But it had struck before either had heard it. Was there, however, any objection to thinking that what we call the past and the future were simply the order in which events happened to appear to *us*? We happened to be moving away from 1900 and towards 1930, just as the earth happened to revolve in one direction and not the other. But could 1900 and 1930 not both be equally real, each holding a fixed position in an unchangeable series?

Were that so, the direction of the stream of time would have a meaning only for us and might have the opposite meaning for other consciousnesses and no meaning at all for an absolute consciousness.

The interest of the speculation extended from Time to cause and effect. A common conception of causation involved the idea that 'cause' and 'effect' indicated nothing more than different positions in the time sequence. When we spoke of the past determining the future we might also speak of the future justifying, explaining or even determining the past. Past and future, cause and effect might indeed be mere aspects of a timeless reality.

TheTimes.co.uk

Inspired perhaps by Albert Einstein's theories published in 1905....???
If you want more have a look at

<https://listverse.com/2018/06/12/10-interesting-conceptions-on-the-nature-of-time/>

Richardsons' Ramblings

Back in April 2014 Mike and I had a very peaceful week in a circular stone tower in rural Shropshire near Craven Arms. The tower looked old but was built some years previous and wonderfully appointed. We went back a few years later – big mistake with a dog as Hebe was forever wanting to go up the very authentic stone spiral staircase to the sitting room or back down to the kitchen! Clun is a particular favourite of ours – such a lovely tranquil town by the River Clun and great views from the ruined castle.

We visited Hergest Croft Gardens on the Welsh border near Kington with access to Offa's Dyke Path – on a rather damp and miserable day. The whole area made us feel that we had stepped back in time with the house itself in a time warp – it and the tearoom were built in 1896 and 'yes' we did have tea! The gardens were created by 3 generations of Banks introducing various species collected by Ernest 'Chinese' Wilson prior to 1920, then adding new collections during the 1980's. The newest garden was a box knot garden featuring a slate sculpture – we had a lot of slate at home and thought about emulating something similar but most of it ended up on our 'new' front garden.



It was quite easy to get lost walking round the various gardens and there were just 2 other visitors that afternoon. We decided against attempting any of the woodland walks as we had forgotten our walking boots and I found my ordinary boots were leaking! We were 2 or 3 weeks too early for what was promising to be a magnificent display of rhododendron and azalea flowers, although some magnolias had clung onto their flowers.



The house is not Hergest Croft but National Trust's Brockhampton in Herefordshire which goes back to medieval times when it was a grand hall built by the Dumbleton family. In later years it became a farmhouse. The spring gardens were lovely to walk around along with a Victorian orchard replanted in partnership with the local community. The only blot on the day was the ukulele band playing – sad to say I am not a fan!

I do not think I have heard of the 'naked rambler' in recent years but I am pretty certain that I spotted him trotting down the Long Mynd – Mike had his eye on driving up the steep narrow lane. It was a very cold and blustery day and the only clothing he had on (the rambler, not Mike!) was a rather small towel covering the obvious area and of course walking boots!

Gae

HS2 Annual Report for 2020

The following Annual Report has been received from the Lodge Branch of HS2 (formerly HSHS - The Holford Society for Homeless Spiders).

Historical affirmation.

HS2 annually asserts its domiciliary claims to The Lodge (major and minor branches) of the Holford Branch Lodge as lodged with the International Treaty on Cobwebs in Homes (ITCH) and the Security Convention for Recognising Arachnid Territorial Concerns over Homelessness (SCRATCH).

The year in summary:

1 For the *Lodge Major* (aka 'the only high-rise in the village') 2020 has been a year of continuous upheaval with the two-legged monsters throwing their weight around - especially since March. Incidents have included: repeated invasion of territories; enforced evictions without notice; and, continuing failure to consult. These transgressions were strongly in evidence with the complete re-working of our treasured topfloor suite. While some re-occupation has been possible through the rehabilitation programme, Brother Benjamin who was transported in a skip continues his long walk home from Minehead. Sister Sandy and her Committee on Security (CoS) acted swiftly to find temporary homes in neighbouring roof spaces and commented: "Lettuce hope there's no more of this in the future".

On a brighter note, the *Arachnidia studensiis* sub-branch has won the annual award for the most sophisticated web. The judges commendation noted: "This almost invisible web of the finest nature forms an elegant Pythagorean triangle extending 1168mm horizontally from the end of the top of a bookcase. Not only was the web of aesthetic and cultural significance but its great size and strength have provided additional book storage for some eight volumes - albeit in decreasing sizes." In thanking the judges for the award, a Spokesspider for the sub-branch reminded us of both the group's long history of fine spinning and the historical tonnage of silk it had produced in the heyday of the local silk industry. They also noted what was presumed to be a mark of deep respect from the two-leggers that the web has been given Stage II Heritage Listing and, consequently, the web will be ever-preserved and any attempted evictions would be illegal.

2 For the *Lodge Minor* (aka Little Lodge) the situation has been nothing short of a major catastrophe. Such was the destruction that an International Disaster was declared. Homelessness was recorded at 97%, the number of deaths were unknown but were estimated to be in their tens, and injuries were extensive. To exacerbate matters, the Spiders' Working Injuries Group (SWIG) has been unable to meet for some months as its headquarters has been closed. Cousin Cuthbert (HS2's archivist) reports that, square metre for square metre, the scale of the Little Lodge evictions and displacements are amongst the greatest seen in our history. The sheer scale of the evictions has led to radical talk of forming a non-violent resistance movement. Meanwhile, some sisters and brothers are contemplating a better life back in our ancestral home - the old Silk Mills.

3 *Garden areas.* These continue to be relatively safe so long as appropriate safety gear is worn. (Members are reminded that safety boots can be obtained for free - up to a limit of forty pairs per family. However, families in excess of ten in number may apply for special assistance.) Importantly, the Society does have concerns around emerging rumours of future development projects.

Awards and achievements for 2020

Arachnidia ensuitia: Award for 'newest and safest' escape-and-return route on eviction from window to roof below – then down pipe, back in under the door and return within one hour – for fitness and agility with no net loss of numbers.

Arachnidia cellaria: Achievement award for reoccupation of an oft-underlooked (as opposed to the loft, overlooked) area of major significance to the building.

Arachnidia anarchii: Creativity award for 'Occupy Movement' initiative.

Arachnidia garagium: Bravery award for attempted nest in a two-legged's beard during ceiling insulation works.

The year ahead/projects:

- Developing international collaborations – pen pals, cob pals, cobwebs, web links, etc.
- Applications for grants for super-webbing building projects.
- Application to establish a Somerset Silk Spinning Institute (SSSI) as part of the Arachnids' Organising New Business (AONB) scheme.
- Peaceful reclamation of lost territories.

Signed, Secretary, HS2, January 2021. (*Thanks to Steve Keirl*)

Some new entries for the 2021 Oxford English Dictionary

Nonversation : A completely worthless conversation, wherein nothing is illuminated, explained or otherwise elaborated upon. Typically occurs at parties, bars or other events .

Destinesia : When you get to where you were intending to go, you forget why you were going there in the first place.

Unkeyboardinated : Lacking physical or mental keyboard coordination; unable to type without repeatedly making mistakes.

Cellfish : Those who continue to talk on their cell phone, oblivious to the effect on others around them.

Textpectation : The anticipation one feels when waiting for a response to a text message.

Carcolepsy : The inability to stay awake and alert when in anything that moves like car, train, plane and bus.

Hiberdating : Someone who ignores all their other friends when they are dating a boyfriend/girlfriend.

Deja poop : The feeling that the same crap keeps happening.

Errorist : Someone who repeatedly makes mistakes.

Holford Recipes



Chocolate Cheesecake

This is the silkiest, smoothest, most meltingly delicious chocolate cheesecake ever! Looks impressive but easy to make.
Serves: 12

Thanks to Ann Steer for this delicious dessert! (Mo P)

You also need a 20cm spring-form cake tin
Easy recipe. Prep time 20 mins Cook time 1 hr

Ingredients

- 175g digestive biscuits, crushed
- 2tbsp cocoa powder or caster sugar
- 1tbsp golden syrup
- 55g butter
- 500g light cream cheese
- 397g can Carnation Condensed Milk
- 300g dark chocolate, melted
- 3 eggs
- 2 tsp vanilla extract

1. Preheat the oven to 180°C, (160°C for fan ovens), Gas Mark 4. Double wrap the outside of the cake tin in cling film.
2. Mix together the crushed biscuits and cocoa powder. Melt the butter and golden syrup in a small pan or in the microwave and stir into the crushed biscuits until combined. Press into the base of the tin and chill for 10 minutes.
3. Beat the cream cheese until soft in a food processor (or with an electric hand mixer). Gradually add the condensed milk and then add the remaining ingredients. Beat until very smooth. Gently pour the mixture over the set biscuit base.
4. Sit the cheesecake in a roasting tin. Pour very hot water into the roasting tin to come halfway up the sides of the cake tin. Bake in the centre of the oven for 1 hour. Turn off the oven, without opening the door, and leave for 1 hour to set. Cool and then chill for 4 hours or overnight. Remove from the tin and serve.

Not one for the New Year's Resolution Diet Group.... ;-)

Xmas Post

Thank you so much to you all for supporting the Xmas post again this year. More than 300 cards were delivered with the help of Sue & Keith Edwards and Mo & Erl Plomgren collecting and delivering, Grateful thanks also to Gae & Mike Richardson for dealing with Dodington deliveries. A donation of £201 has been sent to the Dorset & Somerset Air Ambulance. Many thanks to all those who donated. Sue Edwards

So what is a **Parish Council** ... and what does it do?

Well, here is a potted version....just some of things your local Parish Council does.



Many people are in the dark about what exactly a Parish Council is and what it can (and can't) do. The Parish Council exists to help residents (sometimes called parishioners) and to be a point of contact for ideas and suggestions for improvements in the village. The minimum number of councillors in all Parish Councils is 5 and at least 3 must be present for meetings to go ahead. Holford Parish Council is allowed seven councillors and as such is relatively small. Councillors give their time on a voluntary basis and are not paid. The only paid employee is the Parish Council Clerk. Councillors and the Chairman cannot act or make individual decisions on behalf of the council. Decisions are made by vote within council meetings.

Parish Councils are an essential part of the structure of local democracy and have a vital role in acting on behalf of the communities they represent. They give views, on behalf of the community, on planning applications and other proposals that affect the parish. It is the first tier of the local government system and as such has legal '*duties*' and '*responsibilities*'. It also has '*powers*', the things that it **can** do, essentially related to local matters, such as looking after community buildings, open spaces, play areas, street lighting, bus shelters, car parks and more and importantly the PC has a duty to remain transparent in all its activities.. A lot goes on between meetings – there is plenty of work to do! You can speak to any of the councillors if you have a issue that you would like to bring up.

One of the key areas that the council is involved in is local planning applications. It is the Council's remit to visit any proposed developments and to give their opinion, with due regard for the views of the local people, including close neighbours, on whether or not a proposal should go ahead. It is **not** able to make a decision about an application but the planning department has a legal duty to notify the council so that it can represent the local views and this may influence the final decision made. The Parish Council's role is to try and influence organisations like the planning authority who ultimately have the final say.

The council also has the power to raise money through taxation, the Precept. Parish Councils may spend money on any purpose, which in its opinion is of direct benefit to all or part of its community. You may remember that your Parish Council was able to borrow money to enable the upgrade of the Village Hall to go ahead. Currently the Parish Council has funded (with Kilve PC) the planting of new trees (very small whips) which we hope will eventually replace the War Memorial trees that are showing signs of decline.

Meetings of the Parish Council are public meetings and members of the public have a statutory right to attend as observers. As part of its community engagement local people are very welcome at Parish Council meetings, currently held via Zoom. You can find the link to join on the Parish Council meeting under Agenda on the website <https://holford-pc.gov.uk> Holford meetings are on the second Monday in the month on alternate months. The public has no legal right to speak unless the Parish Council Chairman authorises them to do so. Parish Councils can set out an agreed time for public participation when members of the public are invited to speak. Before the start of the official Holford PC meeting there is a fifteen minute slot for the public to 'have their say'. Please do come along and air your views – they do matter. Alternatively if you are a bit shy you can email the Clerk at any time to ask for something to be discussed at a meeting!

This is a brief introduction to some of the things the council does. You will find much more information on the Parish Council website and you can contact any of the Councillors or the Clerk to raise issues that affect the Parish or to make suggestions for improvements.

There is currently a vacancy for a Parish Councillor – if you would like to get involved please contact the Clerk or any of the councillors for more information contact details are on the website at <https://holford-pc.gov.uk>

Holford Parish Council Chairman's report – January 11th 2021

Once more back in lockdown, with no end in sight, but we will have to be patient. Many of our projects are on hold at the moment as you would expect.

Transport :

There is no Community Bus Service at present. There were plans to reinstate it but these have been overtaken by events. The Slinkey bus is apparently still running. The Community Speedwatch scheme has also been suspended for the time being in view of the covid restrictions.

Councillor Young will report the issue of a speed reduction during the meeting.

Local Government Reorganisation plans are ongoing. The Secretary of State invited Somerset County Council to submit their justification for change to one single, unitary authority by November 9th which they did. Full details of the proposal are now posted on the One Somerset website.

<https://somerstnewsroom.com/2020/12/09/one-somerset-pledges-launched-as-blueprint-for-better-local-services-submitted-to-government/>

Planning :

- The planning application to extend the use of land at Moorhouse Farm to house EDF workers was recently refused, however an amended application has now been received which attempts to justify extending the permission. The Parish Council has no objections provided that the site does not become a permanent residential caravan site in future.
- Falcon Housing's planning application to change the consent for the playground at Portway so that it can be made accessible to families again has not progressed any further as a number of staff have been furloughed. It is proving difficult to get any projects moving in these lock down times
- Silk Mills Planning Application appeal to the Secretary of State has been turned down. The full reasons for the refusal are on the Planning Inspectorate website which can be accessed via SWAT planning portal.
<https://www.somersetwestandtaunton.gov.uk/planning/find-a-planning-application/>

Other news

There are no immediate plans to open The Plough before February at the earliest.

The National Trust has sent two separate inspectors to have a look at the hedge bank between the Church and the approach to the triangle following requests from local residents. They consider it not to be a safety issue so no action will be taken at present but they will review this decision if necessary.

We are looking for enthusiastic local people to join the Parish Council. Although we are extremely grateful for all our councillors it would be nice to have some younger people on the team! Please contact the Clerk if you would like to be involved. A couple of hours a week are about all you would need to contribute. The official minutes are on the website : www.holford-pc.gov.uk

BRAIN TEASERS

See inside for
the latest riddles on
Page 7

?

(Answers on Page 11)
Thanks to Mike Richardson

Oil delivery

Time to stock up again?
For those wishing to make use
of the community oil
delivery scheme.
Orders will need to be placed by
Monday for deliveries in the
following week, usually on
Wednesday

*Please put these dates on
your calendar*

Feb 15th , March 15th and
April 12th

Contact :

David Young on 741249
dauidyoung1934@talktalk.net

Lottery



There are no recent lottery
draws. Steve and Chris
Keirl have taken on
managing the lottery this
year.

It is time once again for
your subscriptions! £10 for
the year. Good prizes and a
good cause too!

What's On? – Dates for your Diary
Some events are restarting please see the
Village Hall page for details

Holford and District Village Hall

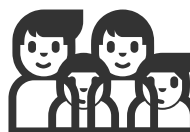
Bookings : Emily Hecksher T : 741694
or on line at www.HolfordVillageHall.org



The Plough
Inn is
currently
closed



As you can imagine, due to the latest government
updates on gatherings during Coronavirus epidemic
many events
have been cancelled.
Hopefully things will get back to normal
sooner rather than later



**VARIOUS EVENTS PLANNED ONCE THE VILLAGE HALL IS
ABLE TO RE-OPEN. PLEASE SEE THE VILLAGE HALL
WEBITE FOR UPDATES** web address above

Weekly regulars CURRENTLY ON HOLD

Mon	Computer Club	10.00 – 12.00
	Short Mat Bowls – Kilve Village Hall	7.00pm
	Aerobics, Pilates and Stretch	6.30pm
Tues	Karate – (ex 3 rd Tues in month)	6.30 pm (1hr)
Wed	Music and Movement	2.30pm (1hr)
Thu	Coffee and Play Table Tennis	9.30 – 11.30 7.00pm
Fri	Art Group Craft Group	10.00 – 1 pm 1.00 – 4pm

Recycling collections every Friday

Collections a day later after Bank Holidays

Refuse collections : Every two weeks.

Collections a day later after Bank Holidays.

**Most recycling centres are open but on
Limited days and there is no assistance
available. Masks mandatory. Please check
before travelling to the site.**

**New refuse and recycling systems are to be
brought on line from the Spring - to be confirmed**

We hope you have enjoyed this edition

If anyone has any articles, ideas, news, snippets etc
please do let us have them

before the deadline March 8th

Please send items for the next issue to

Emma at Winsors Farm

Email : EmmaCavendish01@aol.com

Publication date March 31st

**Please don't send pdf files or images and text
directly from your phone– these are very
difficult to edit. Save your photos to a jpeg file.**

Appendix 1 WINSORS FARM MEADOW FLORA

Agrimony
 Alkanet
 Anemone, Wood
 Archangel, Yellow
 Avens, Water
 Avens, Wood
 Bedstraw, Hedge
 Bedstraw, Lady's
 Betony
 Bindweed, Field
 Bindweed, Hedge
 Birds Foot Trefoil, Common
 Birds Foot Trefoil, Greater
 Bistort, Amphibious
 Bittercress, Hairy
 Bittercress, Wavy
 Bluebell, English
 Bogbean
 Bramble
 Bugle
 Burdock, Greater
 Burnet, Salad
 Buttercup, Bulbous
 Buttercup, Creeping
 Buttercup, Meadow
 Campion, Red
 Carrot, Wild
 Cat's Ear, Common
 Celandine, Lesser
 Chickweed, Common
 Cleavers
 Clover, Red
 Clover, White
 Cranesbill, Doves-foot
 Cranesbill, Meadow
 Cuckoo Flower
 Daisy
 Daisy, Ox-eye
 Dandelion
 Deadnettle, Red
 Deadnettle, White
 Dock, Broad-leaved
 Dog Violet, Common
 Dropwort
 Figwort, Common
 Forget-Me-Not, Common
 Forget-Me-Not, Water
 Foxglove
 Frogbit
 Fumitory, Common
 Goat's-Beard
 Ground Ivy
 Harebell
 Hawkbit, Autumn
 Hawkbit, Rough
 Hawk's-Beard, Smooth
 Hawkweed, Mouse-Ear
 Hawkweed, Orange
 Hemp Agrimony
 Herb Robert
 Hogweed

Honeysuckle
 Iris, Yellow
 Ivy
 Knapweed, Common
 Loosestrife, Purple
 Lords and Ladies
 Mallow, Musk
 Marsh Marigold
 Meadowsweet
 Medick, Black
 Mercury, Dog's
 Mint, Water
 Mouse-Ear, Common
 Mullein, Great
 Mustard, Garlic
 Narcissus, Poet's
 Narcissus, Wild
 Nettle, Common
 Nipplewort
 Orchid, Common-Spotted
 Orchid, Heath-Spotted
 Orchid, Pyramidal
 Parsley, Cow
 Pea, Narrow-leaved Everlasting
 Pignut
 Pimpernel, Scarlet
 Plantain, Ribwort
 Primrose
 Ragged Robin
 Ragwort, Common
 Rattle, Yellow
 Restharrow
 Rush, Soft
 Rush, Hard
 St John's Wort, Perforate
 Saxifrage, Meadow
 Scabious, Devil's Bit
 Scabious, Field
 Selfheal
 Snowdrop
 Sorrel, Common
 Sorrel, Sheep's
 Sowthistle, Smooth
 Spearwort, Lesser
 Speedwell, Germander
 Speedwell, Common Field
 Spurge, Caper
 Stitchwort, Greater
 Stitchwort, Lesser
 Teasel
 Thistle, Creeping
 Thistle, Marsh
 Thistle, Spear
 Toadflax, Ivy-leaved
 Toadflax, Purple
 Trefoil, Lesser
 Valerian, Common
 Valerian, Red
 Vetch, Bush
 Vetch, Common
 Violet, Sweet

Water-Lily, Fringed
 Water-Lily, White
 Willowherb, Broad-leaved
 Woundwort, Hedge
 Woundwort, Marsh
 Yarrow

TREES AND SHRUBS

Alder
 Apple, Crab
 Ash
 Birch, Silver
 Blackthorn
 Briar, Sweet
 Buckthorn, Alder
 Bullace
 Cherry, Bird
 Dogwood
 Elder
 Elm, English
 Elm, Wych
 Guelder Rose
 Hawthorn
 Hazel
 Holly
 Hornbeam
 Maple, Field
 Privet, Wild
 Rose, Field
 Rose, Dog
 Rowan
 Service-Tree, Wild
 Spindle
 Sycamore
 Wayfaring Tree
 Whitebeam
 Willow, Goat
 Yew

BIRDS

Blackbird
Blackcap
Brambling
Bullfinch
Buzzard
Chaffinch
Chiff-Chaff
Crow, Carrion
Dove, Collared
Duck, Mandarin
Dunnock
Fieldfare
Flycatcher, Spotted
Goldcrest
Goldfinch
Greenfinch
Gull, Black-headed
Gull, Common
Gull, Herring
Gull, Lesser-Black backed
Heron, Grey
Hoopoe
Jackdaw
Jay
Kestrel
Kite, Red
Linnet
Magpie
Martin, House
Martin, Sand
Nuthatch
Pheasant
Pigeon, Wood
Raven
Redstart, Common
Redwing
Robin
Rook
Sandpiper, Common
Siskin
Snipe
Sparrow, House
Sparrowhawk
Starling
Swallow
Swift
Thrush, Mistle
Thrush, Song
Tit, Blue
Tit, Coal
Tit, Great
Tit, Long-tailed
Tit, Marsh
Wagtail, Grey
Wagtail, Pied
Woodpecker, Great Spotted
Woodpecker, Green
Wren
Yellowhammer

BUTTERFLIES

Blue, Common
Blue, Holly
Brimstone
Brown, Meadow
Comma
Copper, Small
Fritillary, Silver-Washed
Gatekeeper
Grayling
Hairstreak, Blue
Heath, Small
Orange-Tip
Painted Lady
Peacock
Red Admiral
Speckled Wood
Skipper, Large
Skipper, Small
Tortoiseshell, Small
White, Green-Veined
White, Small
White, Large
White, Marbled
Yellow, Clouded

DRAGONFLIES

Chaser, Broad-Bodied
Damselfly, Azure
Damselfly, Blue-tailed
Damselfly, Common Blue
Damselfly, Large Red
Darter, Common
Demoiselle, Banded
Golden-Ringed
Hawker, Migrant
Hawker, Southern